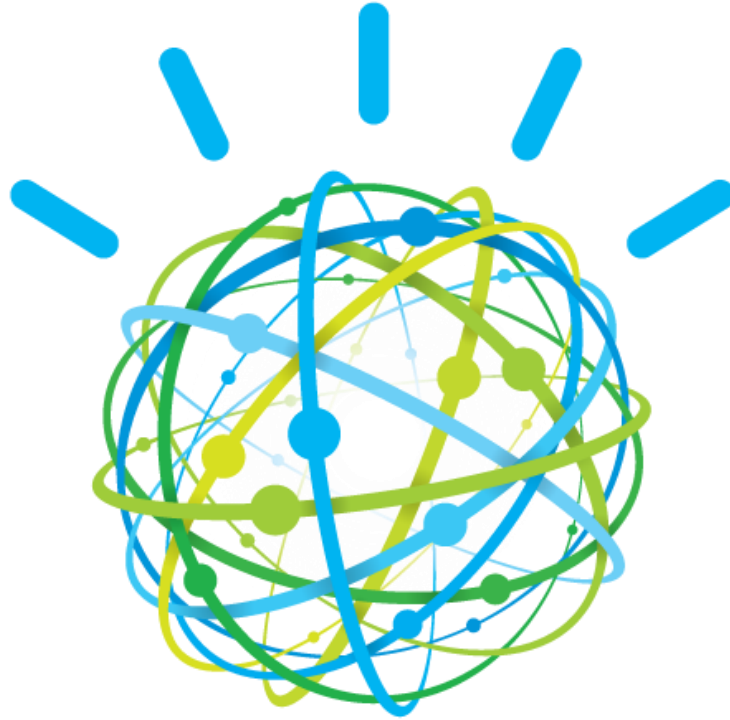


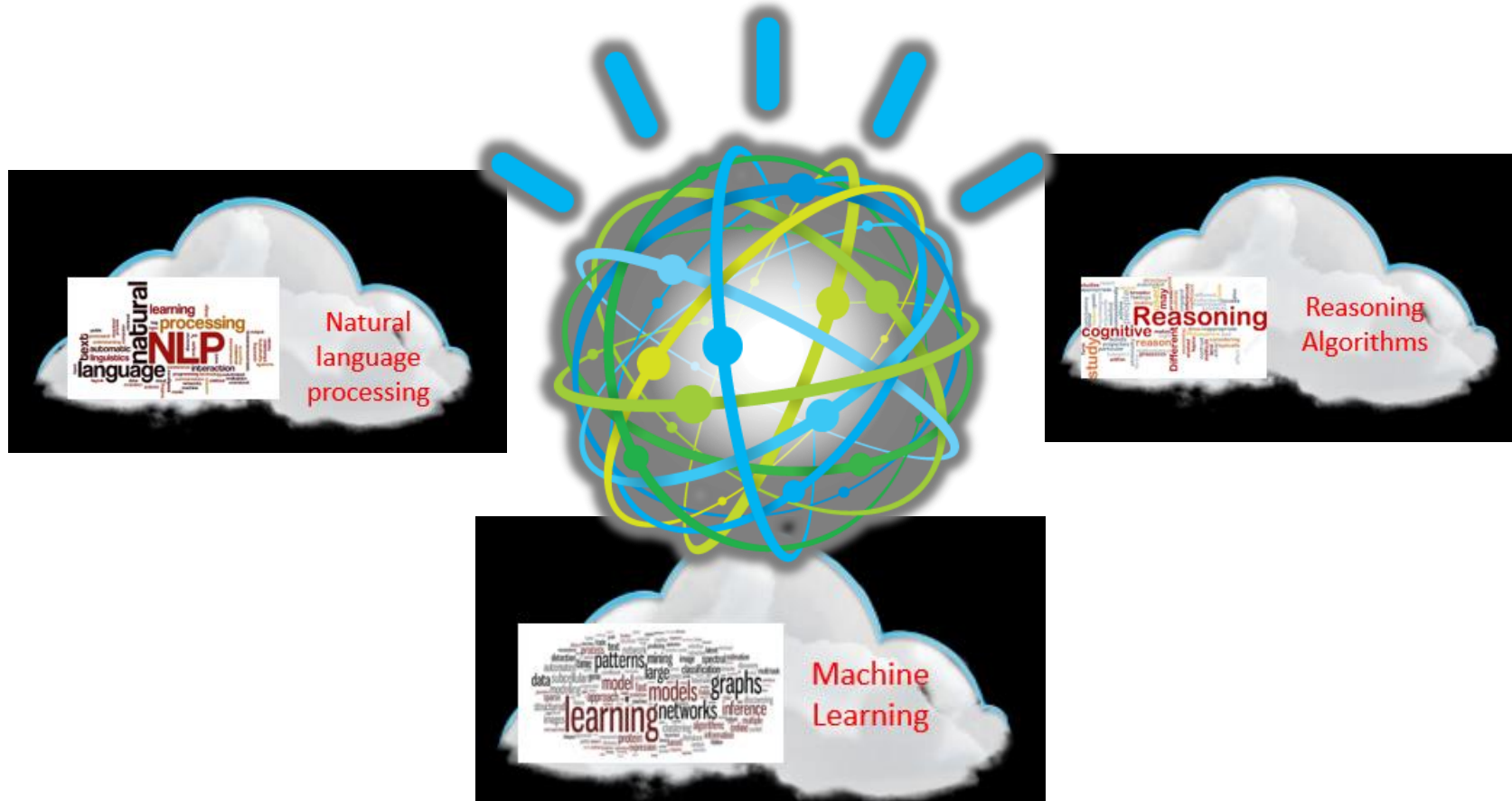
IBM Watson : Courses Overview



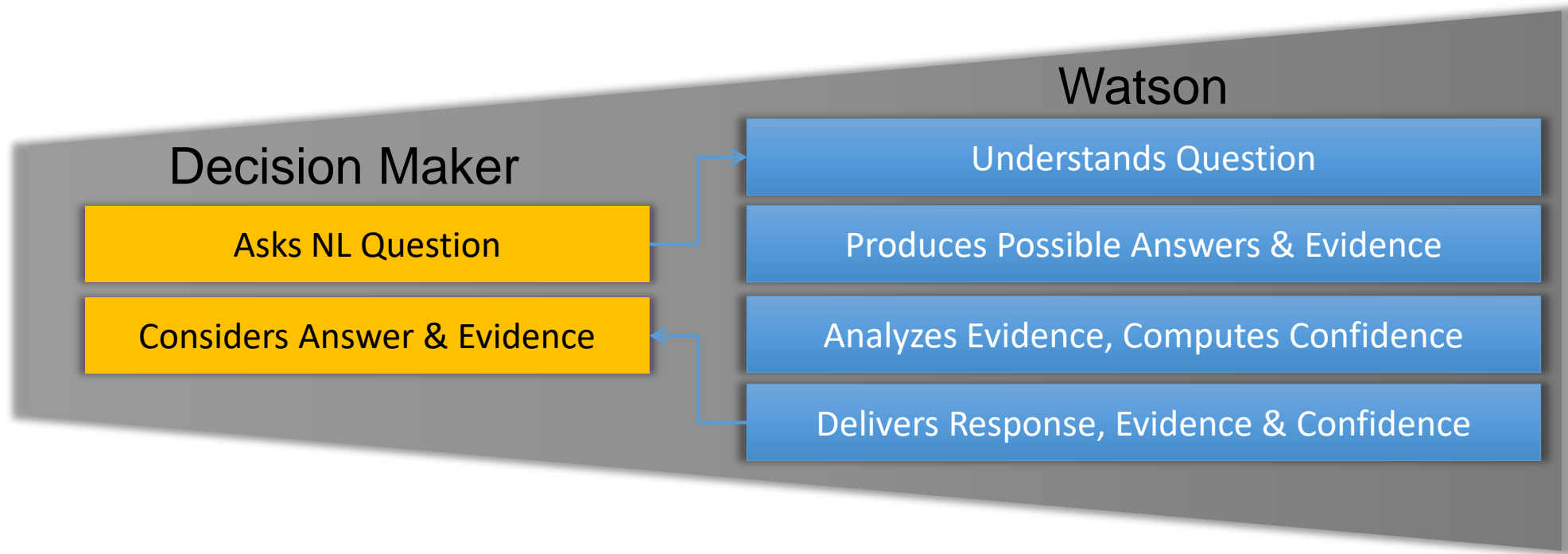
Prepared by: Nikolaos Sakaltras, Prashant Chaudhari, Akriti Sharma

What is IBM Watson

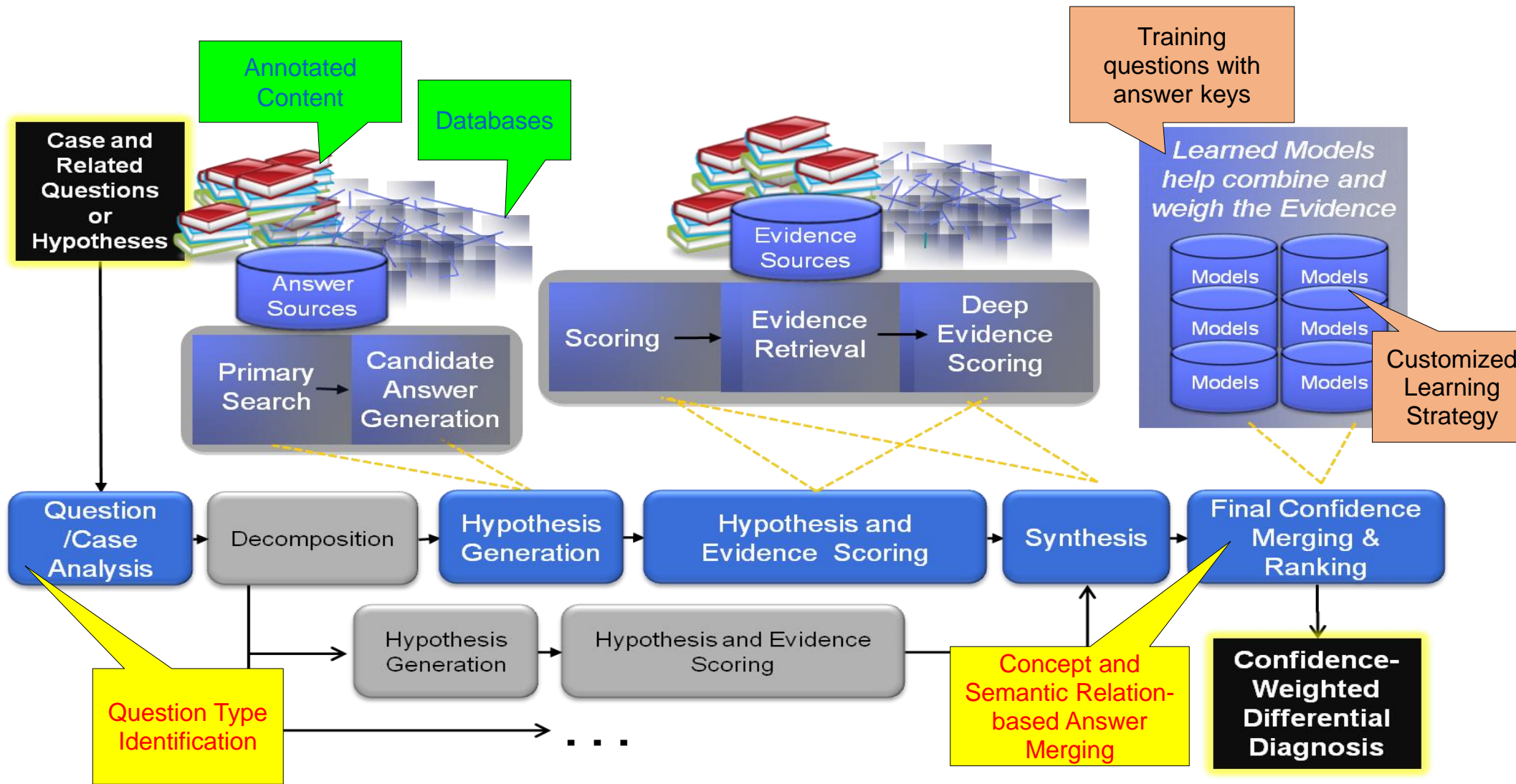
“**Watson** is a cognitive technology that can think like a human.”



How Watson's cognition differs!



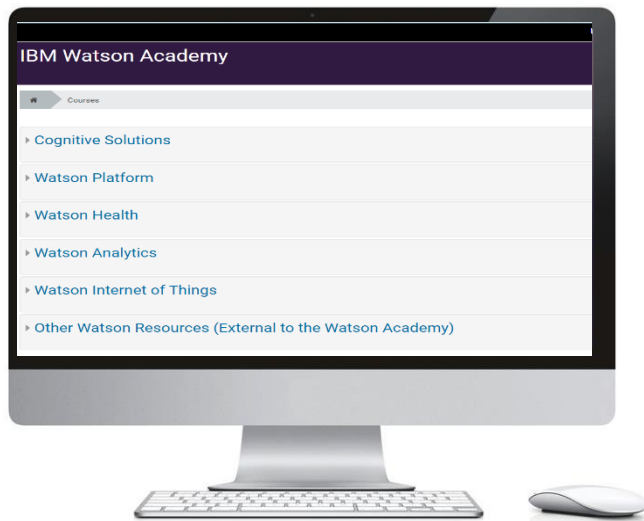
Watson Cognition: Architecture Pipeline



Read more.....



https://www-304.ibm.com/services/weblectures/dlv/Gate.wss?handler=Information&action=customer&content=c_overview&customer=watsonwww&offering=wtm1



<https://www.watson-academy.info/?redirect=0>



IBM Watson Platform

- Getting Started with Watson
 - Basic terminology and the applications of Watson
 - [Watson 101](#)
 - [External Resources / Links](#)
 - Bluemix / Watson Developer Cloud
 - Natural Language Processing
 - enabling computers to derive meaning from human or natural language input and others involve [natural language generation](#)
 - [Natural Language Processing 201](#)
 - [Natural Language Processing 202](#)
- Watson Cloud Technology and Support (IBMers)

- Watson Engagement Advisor / Dialog / Conversation Services (IBMers)
 - Conversation Design applicable to any conversational application
 - [Designing Conversational Solutions \(Watson Conversation Service\)](#)
- Watson Explorer
 - analyzes structured and unstructured content
- Watson Knowledge Studio
 - end-to-end development of a machine learning annotator
 - end to end cycle of domain adaptation
 - [WKS201](#)

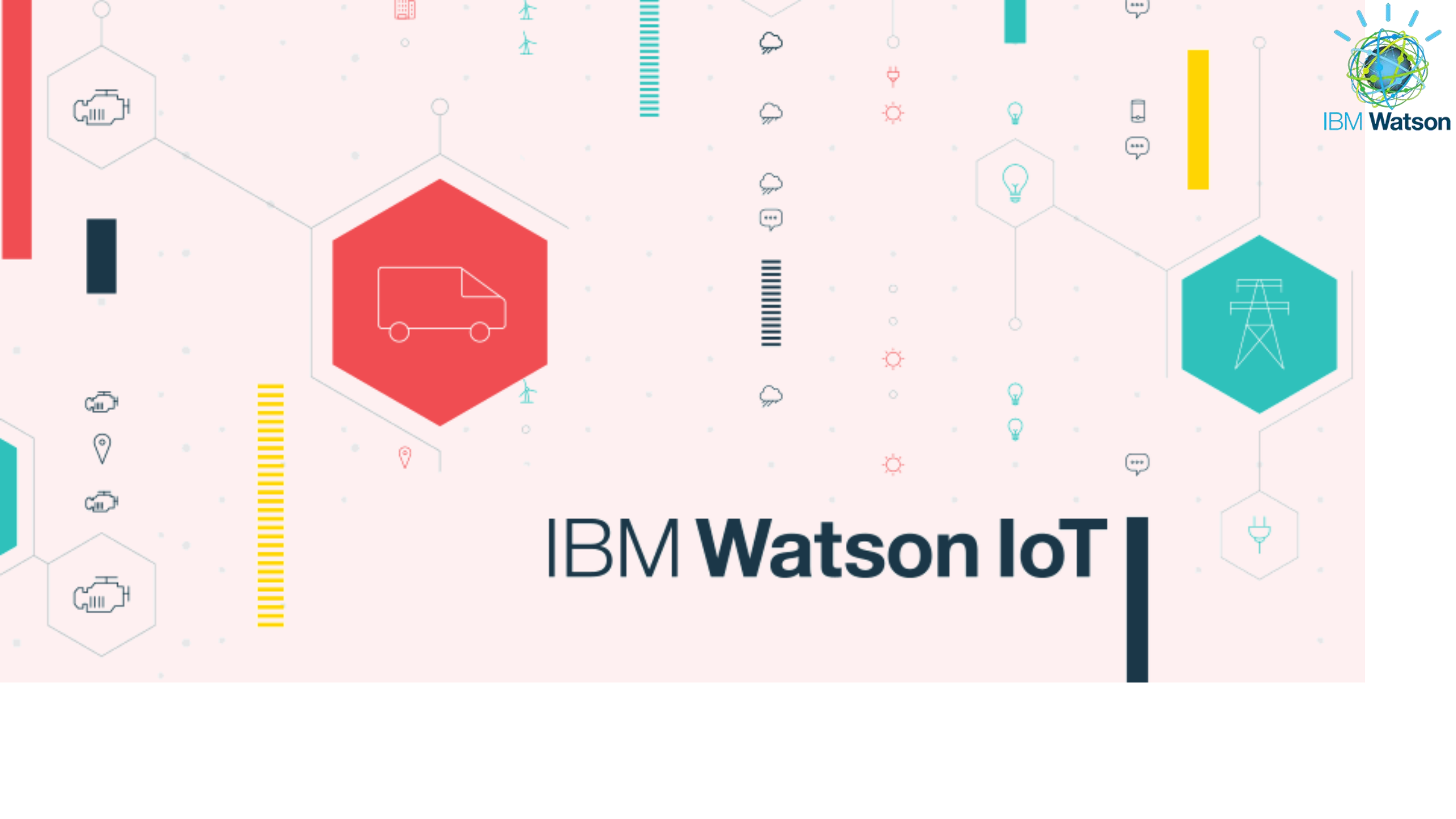


IBM Watson Analytics

- advanced analytics without the complexity
- smart data discovery service
- automates predictive analytics
- enables effortless dashboard and infographic creation
- answers and new insights to make confident decisions in minutes



IBM Watson IoT



Why to use it ?



- Ever increasing DATA.
- Virtually all the devices can be connected to each other.
- Transform and store your data - extract essential data from diverse sources using rich Analytics.
- Easily connect devices to your applications for a specific use.

The IoT Platform



There are devices present everywhere,

1. The Connection – data coming to the cloud
2. Security and Privacy – data from a particular user only
3. Organisation and Processing of data – use of IoT applications

The platform runs on IBM Bluemix to create applications for various devices.

How to use it ?



- Create a free account and login.
- In the Dashboard, select The Internet of Things Foundation service and get started with your IoT Project.
- Add your device to use, with a device-ID.
- If you don't have any devices, then use IoT Starter Boilerplate(Simulated device).
- Start making applications with Node-RED for BlueMix.

SilverHook Powerboats using IBM IoT

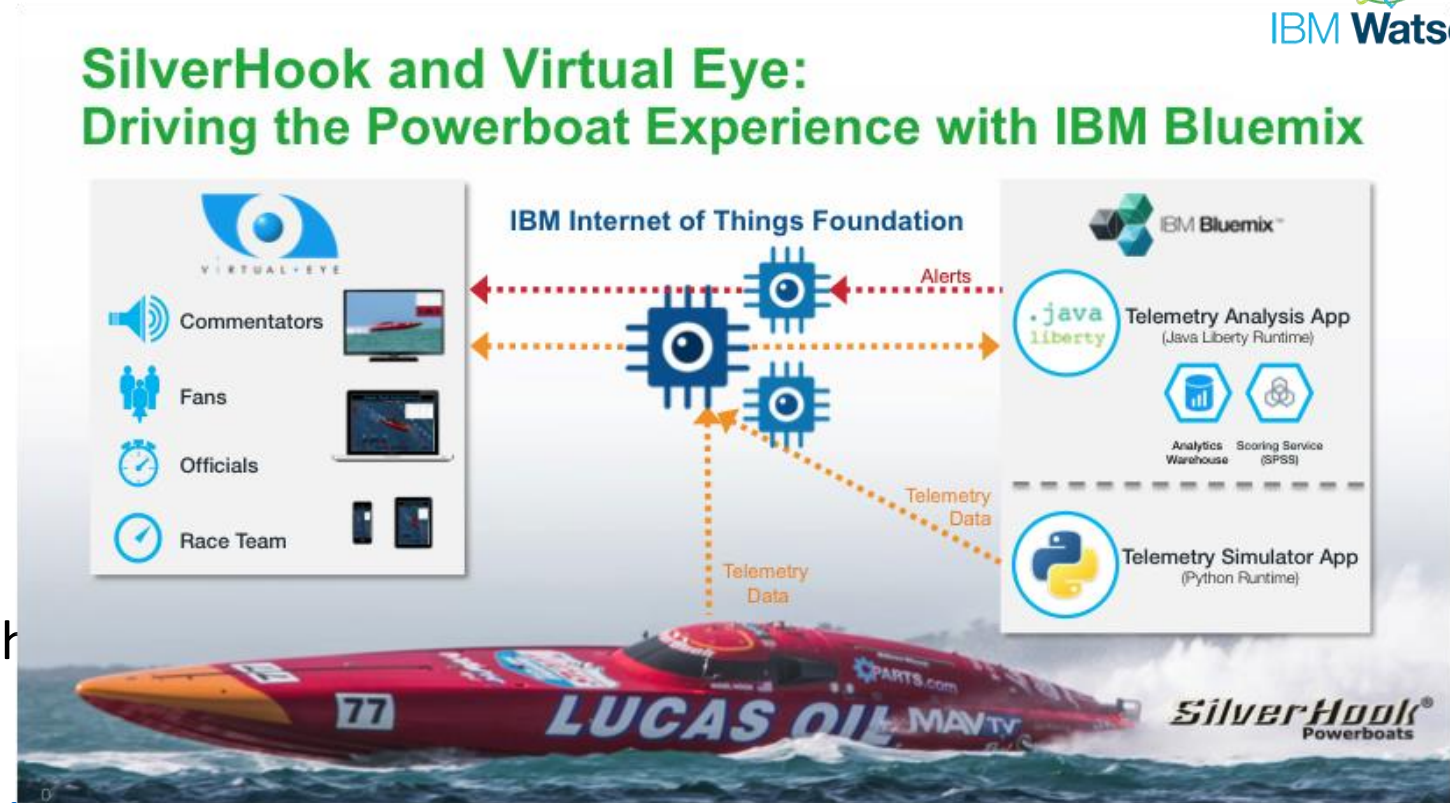


The 3 problems –

- Speed and ocean conditions.
- Fans experience at the event.
- Lag time for announcing final winning placement.

Solution –

- A virtual eye using IoT Foundation for th



Ref - <https://randywil.wordpress.com/2014/10/31/silverhook-powerboat-racing-powered-by-jstart/>

PORT ENGINE



OIL PRESSURE



OIL TEMP



WATER PRESSURE



WATER TEMP



FUEL PRESSURE



BOOST



VOLTAGE

LUCAS OIL - DASHBOARD

Alert: BOTH ENGINES - LOW WATER PRESSURE



STARBOARD ENGINE



OIL PRESSURE



OIL TEMP



WATER PRESSURE



WATER TEMP



FUEL PRESSURE



BOOST



VOLTAGE

Example Apps (- for Smartphone, Sensor)



Easily connect your device by giving a device name and email-id, you can visualize the sensor data live from the device (URL).

- Steps -
- :

Connect a networked device to the IBM Watson IoT Platform in IBM Bluemix and watch live sensor data stream into a sample dashboard.

1 Select your device

Get going in 2 minutes or less



Smartphone

Load a web page on your smartphone to send live sensor data over the internet to the cloud-based IBM Watson IoT Platform.



TI SensorTag

Send live sensor data from your TI SensorTag over the internet to the cloud-based IBM Watson IoT Platform.



ARM mbed

Send live sensor data from your ARM mbed Ethernet Starter Kit over the internet to the cloud-based IBM Watson IoT Platform.



2 Enter your Smartphone information

Device ID

Enter a short name to enable you find your smartphone in the public demonstration dashboard (for example: Brian_Phone).



Email

By providing your email, you grant IBM permission to follow-up and send offers for IoT services and events.

Email is required.

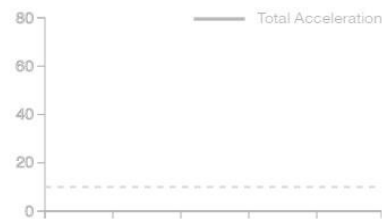


I accept **IBM's Terms of Use** and **IBM's Privacy Statement**.

3 View live data from your Smartphone

Go to this URL on your smartphone to start the connection

Your smartphone device will connect to the IBM Watson IoT Platform and start sending live data.

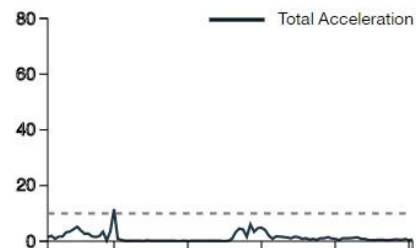
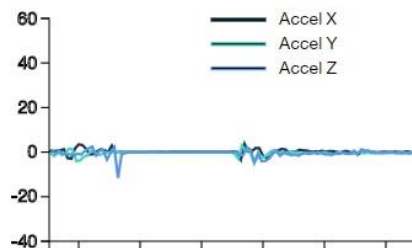


Visualizations will become active when the connection has been started by using the URL above on the smartphone device.

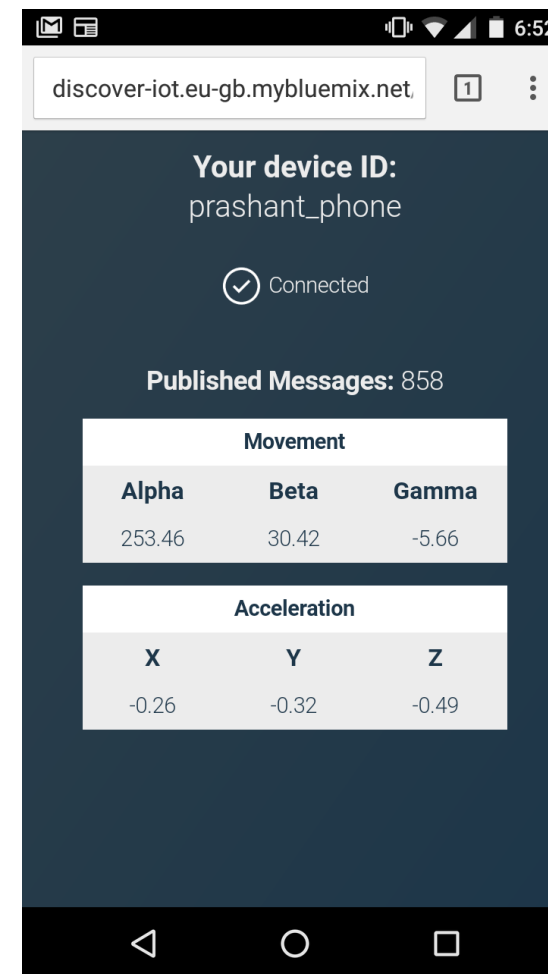
3 View live data from your Smartphone

Watch live sensor data

Your Smartphone is sending live sensor data through the IBM Watson IoT Platform service and from there into this demo application.



Shake your phone until the **acceleration** exceeds 10 m/s².



discover-iot.eu-gb.mybluemix.net

Your device ID:
prashant_phone

Connected

Published Messages: 858

Movement		
Alpha	Beta	Gamma
253.46	30.42	-5.66

Acceleration		
X	Y	Z
-0.26	-0.32	-0.49

Other Courses in this category

- Real-time Analytics
 - Connecting and Managing Devices
 - Connect to manage a particular device.
 - Developer's guide to the Internet of Things
-
1. IBM Asset Management
 2. IBM Facilities Management
 3. IBM Continuous Engineering